

OS 14000 TT

The A2 high end scanner for maximum performance and perfect images



The Future of the Past.

Z
ZEUTSCHEL

*“What you haven’t given up,
you’ve never lost.”*

Friedrich von Schiller (1759-1805)

Millions of books, maps and files are lost every year because they are mislaid or totally ruined. With the disappearance of these valuable cultural assets we normally also lose the information they contain – forever.

What that means for the future of human society cannot be expressed simply in figures. Therefore libraries and archives are not giving up on their efforts to preserve this cultural heritage for future generations.

With our recently developed Omniscan 14000 TT high performance scanner, historic documents can now be scanned with even higher quality and speed. With a scanning speed starting at 3.5 seconds (A2-size) and an illumination system which excludes ultraviolet light, the most sensitive materials, measuring up to 635 mm x 460 mm (25 inch x 18 inch), can be digitized. For the protection of cultural assets the new Omniscan 14000 TT represents a new benchmark in the market exceeding even the highest requirements and combining efficiency with an ergonomic design.





The OS 14000 TT

Description: table top book-/overhead scanner for books, newspapers, large-format documents (manuscripts, drawings, maps)

Book cradle: maximum book thickness 150 mm / 6 inch, bookcradle with glass plate (scanning with or without glass plate), Kit 90° and book holder for ancient books

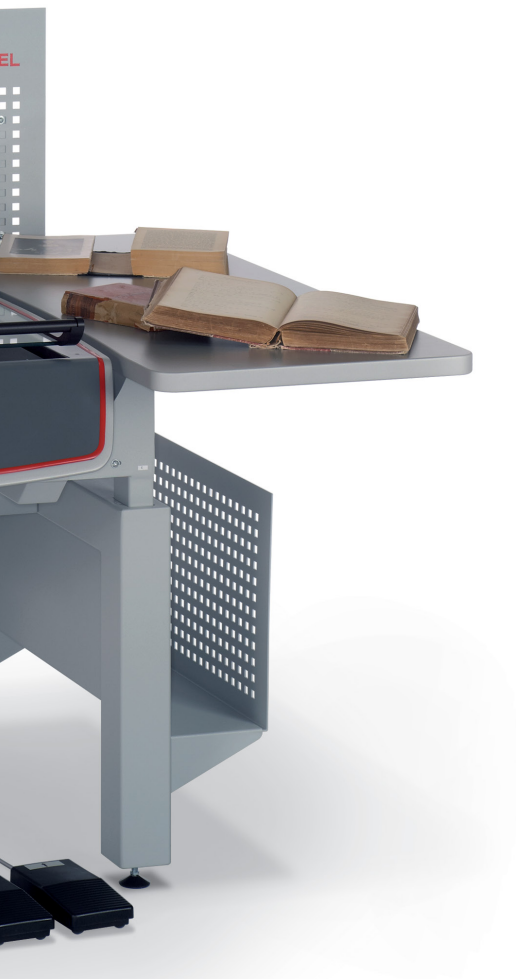
Scan head: with highest contrast quality (8 lp / mm), high precision scan lens, without distortion, field of depth approx. 50 mm / 2 inches

User software: software OS 12, 64 bit, multithreading for high productivity

Image enhancement software (optional): integrated color management, contrast improvement, image rotation, despeckle, deskewing, cropping, masking, b&w scanning with dynamic threshold, etc.

Product advantages

- highest scan quality 600 ppi – 8 lp/mm
- fastest scan speed
- Perfect Book – 3D scan technology for perfect book curve correction
- parallel scanning and saving process due to 64 bit technology and multi-threading
- scanning in both directions
- high productivity due to ROI-scan feature (limitation of scan area)
- color reproduction according to ICC-standards
- no UV/IR radiation
- no reflections with high gloss originals
- ergonomic working with and without glass plate





Technical data OS 14000 TT

Size of originals	635 x 460 mm (> DIN A2) 25 inch x 18 inch (> C-size)
Scan mode	36 bit color output 24 bit color 12 bit gray output 8 bit gray 1 bit b&w output 1 bit b&w
Maximum resolution	600 ppi
Scan speed (color, A2-size)	3.5 seconds / 300 ppi 4.0 seconds / 400 ppi 6.0 seconds / 600 ppi
User software	software OS 12, 64 bit, multithreading for high productivity
Scan head	with highest contrast quality (8 lp / mm), high precision scan lens, without distortion, field of depth approx. 50 mm / 2 inches
Book cradle	maximum book thickness 150 mm / 6 inch, bookcradle with glass plate (scanning with or without glass plate), Kit 90° and book holder for ancient books
Scanner interface	Dual Firewire
Data display	all standard formats, e.g. Tiff uncompressed, TIFF G4, JPEG, JP2, Multipage Tiff, PDF, BMP, PNG, PCX
Accessories	PC, monitor, workstation
Dimensions (w x d x h)	940 mm x 1353 mm x 1621 mm (37 inch x 53 inch x 64 inch)
Foot print	700 mm x 1060 mm (28 inch x 42 inch)
Power requirements	110 - 230 V, 50/60 Hz, 1.1 A – without book cradle (for book cradle see separate brochure)

We reserve the right to make technical changes without notice.

If you are looking for a perfect solution for digitization and preservation of valuable cultural assets and documents, talk to us. For more than 50 years we have been managing all processes of document capturing, archiving, processing and provision of digital data with our analog and digital systems for scanning and microfilm technology at the highest level. Our systems are used worldwide by renowned archives, libraries, universities, land registries as well as commercial enterprises and service providers.



Zeuschel GmbH · Heerweg 2 · 72070 Tübingen
Tel.: +49 7071 9706-0 · Fax: +49 7071 9706-44
info@zeuschel.de · www.zeuschel.com

The Future of the Past.