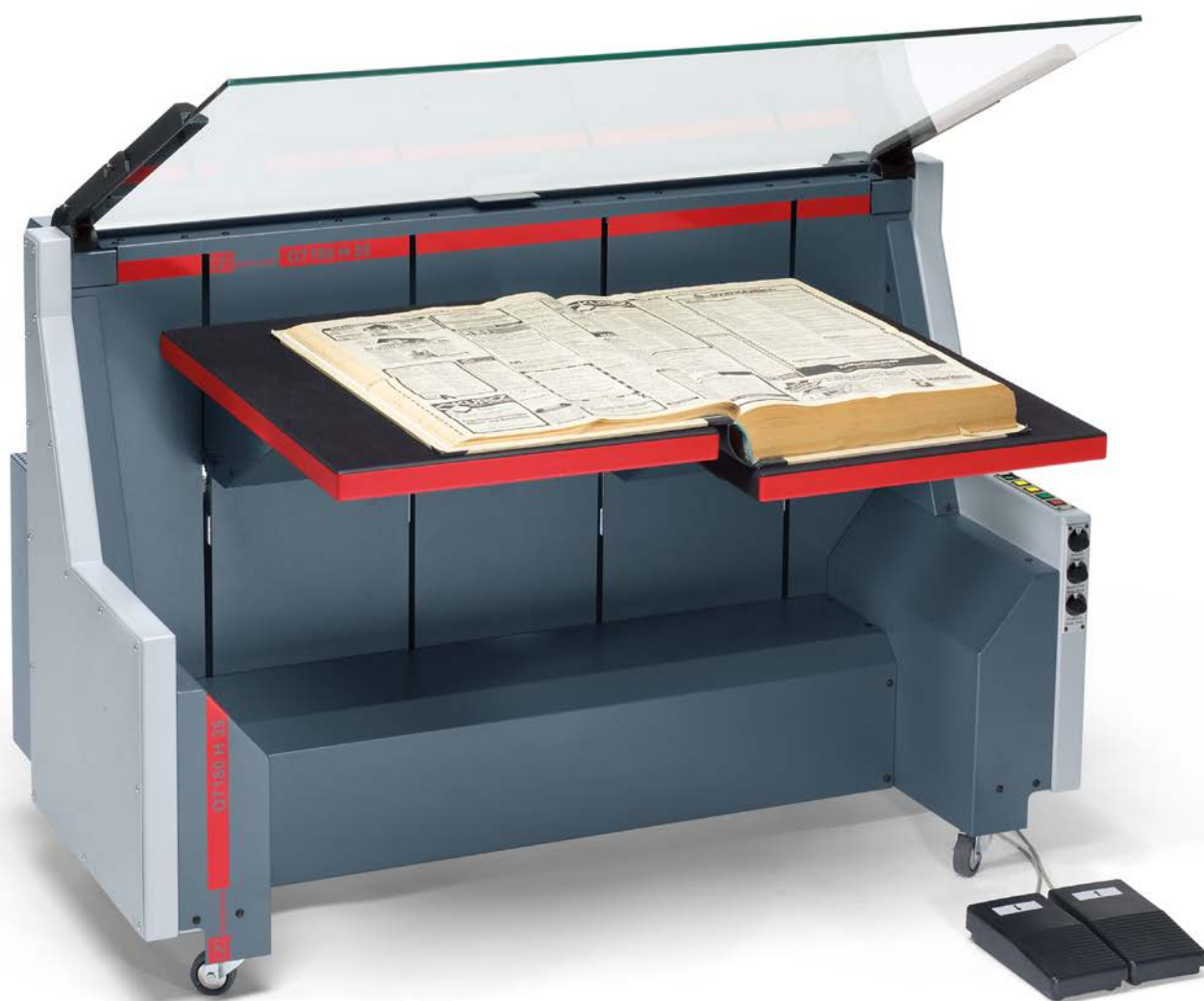


# Copyboard systems

Modular and convenient  
for microfilm cameras  
and book scanners



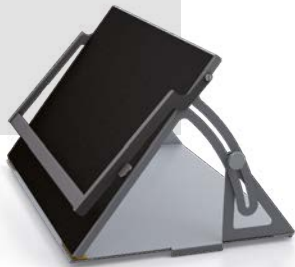
We Digitize Your World

  
**ZEUTSHEL**



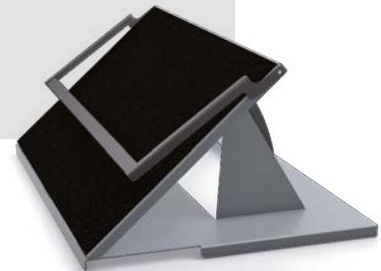
### Book holders 140°-90°

- opening angle 90°
- can be used on both sides



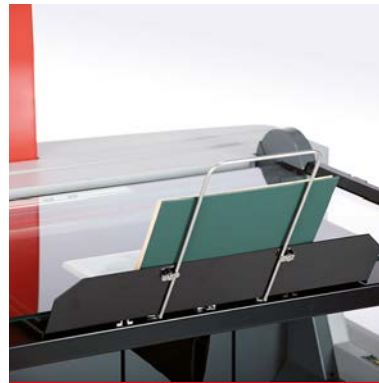
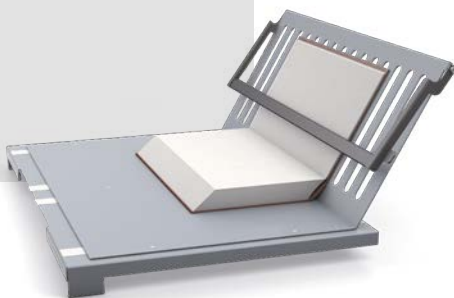
### Book holders A1 140°-90°

- opening angle 90°
- can be used on both sides



### Kit 90°

- opening angle 90°
- for front edge system



### Kit 90° A1

- opening angle 90°
- for front edge system







## OT 180 H 50 XL

Motorised book cradle with self-opening glass plate

- copyboard system with book cradle for careful handling of books
- self-opening glass plate with adjustable opening angle, adjustable up to 110°
- sufficient leg room for comfortable and economically correct working position
- exchangeable book plates
- 2 foot pedal for comfortable opening and closing of the glass plate and for raising and lowering the book cradle
- ergonomic positioning of the control panel (swivel arm)
- constant contact pressure continuously adjustable, independent of the book weight
- sliding, self-balancing book support plates
- easy turning of large pages, limitation for lowering for small books
- semi-automatic working
- parallel application and lowering of the books to avoid damage to the sides when opening the glass plate
- automatic lowering after capture
- thanks to open sides, the original document can be larger than the scanning surface

### Technical specifications

**Max. book size, opened:**

1025 × 610 mm

**Max. book weight:** 40 kg

**Max. book thickness:** 500 mm

**Working height:** 800 mm

**Electr. connection:** 230 V, 50/60 Hz, 500 W, other voltages on request

**w × d × h:** 1180 × 780 × 800 mm



## OT 180 H 35 XL

Motorised book cradle with self-opening glass plate

- copyboard system with book cradle for careful handling of books
- self-opening glass plate with adjustable opening angle, adjustable up to 110°
- sufficient leg room for comfortable and economically correct working position
- 2 foot pedal for comfortable opening and closing of the glass plate and for raising and lowering the book cradle
- ergonomic positioning of the control panel (swivel arm)
- constant contact pressure continuously adjustable, independent of the book weight
- sliding, self-balancing book support plates
- easy turning of large pages, limitation for lowering for small books
- semi-automatic working
- parallel application and lowering of the books to avoid damage to the sides when opening the glass plate
- automatic lowering after capture
- thanks to open sides, the original document can be larger than the scanning surface

### Technical specifications

**Max. book size, opened:**

1025 × 610 mm

(special model: 1025 × 700 mm)

**Max. book weight:** 40 kg

**Max. book thickness:** 350 mm

**Working height:** 800 mm

**Electr. connection:** 230 V, 50/60 Hz, 500 W, other voltages on request

**w × d × h:** 1180 × 780 × 800 mm



## OT 180 H 90°

Book cradle with swivel-mounted glass plate

- book cradle with swivel-mounted glass plate for scanning without glass plate (larger opening angle).
- Optional with:
- automatic GP 0°/90° detection on PC
  - 71 mm increase to 860 mm
  - USB interface integrated into book cradle

### Technical specifications

**Max. book size, opened:**

1025 × 620 mm

(special model: 1025 × 700 mm)

**Max. book weight:** 20 kg

**Max. book thickness:** 240 mm

**Working height:** 800 mm

**Electr. connection:**

230 V, 50/60 Hz, 150 W, other voltages on request

**w × d × h:** 1180 × 723 × 800 mm



## OT 180 H

Motorised book cradle with self-opening glass plate



## OT 180

Motorised book cradle



## OT 180 H A0

Motorised book cradle with self-opening glass plate

- copyboard system with book cradle for careful handling of books with self-opening glass plate
- the book is opened 180° and pressed against the glass plate from below
- easy turning of large pages, (restriction for lowering for small books)
- continuously adjustable contact pressure
- sufficient leg room for fast and comfortable operation using foot pedal
- automatic lowering after capture

### Technical specifications

**Max. book size, opened:**

1025 × 620 mm

(special model: 1025 × 700 mm)

**Max. book weight:** 20 kg

**Max. book thickness:** 240 mm

**Working height:** 800 mm

**Electr. connection:**

230 V, 50/60 Hz, 150 W,

other voltages on request

**w × d × h:** 1180 × 723 × 800 mm

- copyboard system with book cradle for careful handling of books
- the book is opened 180° and pressed against the glass plate from below
- easy turning of large pages, (lowering restriction for small books)
- continuously adjustable contact pressure
- sufficient leg room for fast and comfortable operation using foot pedal
- automatic lowering after capture

### Technical specifications

**Max. book size, opened:**

1070 × 675 mm

(special model: 1070 × 700 mm)

**Max. book weight:** 20 kg

**Max. book thickness:** 240 mm

**Working height:** 800 mm

**Electr. connection:**

230 V, 50/60 Hz, 150 W,

other voltages on request

**w × d × h:** 1180 × 723 × 800 mm

- copyboard system with book cradle for careful handling of books
- self-opening glass plate
- the book is opened 180° and pressed against the glass plate from below
- continuously adjustable contact pressure
- easy turning of large pages, sufficient leg room for fast and comfortable operation using foot pedal
- automatic lowering after capture opening angle 60°

### Technical specifications

**Max. book size, opened:**

1350 × 960 mm

**Max. book weight:** 22 kg, opt. 40 kg

**Max. book thickness:** 220 mm

**Working height:** 860 mm

**Electr. connection:**

230 V, 50/60 Hz, 150 W,

other voltages on request

**w × d × h:** 1520 × 1060 × 860 mm



## OT 90

Book cradle for old, valuable books

- copyboard system with book cradle for old, valuable books, which can be opened between 90° and 180°
- simple capture even deep into the book curve possible
- the book is gently held by placing into a book holder which slides sideways for single page capture of books
- absolute gentle handling of the books
- continuously adjustable contact pressure
- sufficient leg room for fast and comfortable operation using foot pedal
- automatic lowering after capture

### Technical specifications

**Max. size of page, opened:**

420 × 600 mm

**Max. book weight:** 20 kg

**Max. book thickness:** 200 mm

**Working height:** 800 mm

**Electr. connection:**

230 V, 50/60 Hz, 150 W,  
other voltages on request

**w × d × h:** 1180 × 700 × 800 mm



## ZT

Newspaper table with horizontally moveable table plate

- newspaper table with rail-guided, horizontally moveable table plate
- easily adjustable locks
- automatic release of capture on request
- suitable for capture of single newspaper pages

### Technical specifications

**Max. size of original, opened:**

906 × 640 mm

(special model: 1000 × 700 mm)

**Working height:** 800 mm

**w × d × h:** 1180 × 723 × 697 mm



## AT 1

Top light table for opaque originals

- camera table for opaque originals (e.g. technical drawings, geographic maps)
- sturdy tubular steel construction

### Technical specifications

**Max. size of original, opened:**

1070 × 675 mm

**Working height:** 800 mm

**w × d × h:** 1180 × 723 × 800 mm

**The AT 1 is also available with glass plate.**

Other products can be  
found on our homepage:  
[www.zeutschel.com](http://www.zeutschel.com)

**ZEUTSCHEL**





## AT 0

Top light table for opaque originals



## DT 0

Backlight table for opaque and transparent originals



## Vacuum table A0

Copyboard table for flat originals

- camera table for opaque originals (e.g. technical drawings, geographic maps)
- sturdy tubular steel construction

### Technical specifications

**Max. size of original:**

1350 × 960 mm

**Working height:** 800 mm

**w × d × h:** 1350 × 960 × 800 mm

**The AT 0 is also available with glass plate.**

- backlight table for opaque and transparent originals (e.g. technical drawings, geographic maps)
- optimum contrast and perfect density through uniform cold-light illumination
- continuously adjustable light intensity
- simple operation
- moveable, clearly-marked guide bar
- comfortable operation when sitting due to sufficient legroom
- vacuum system to hold down rolled or folded originals on request

### Technical specifications

**Max. size of original:** 1350 × 960 mm

**Working height:** 800 mm

**Electr. connection:**

230 V, 50/60 Hz, 85 W,  
other voltages on request

**w × d × h:** 1600 × 1100 × 800 mm

**The DT 0 is also available with glass plate.**

- copyboard table for single-sheet originals
- study tubular steel construction on wheels
- continuously adjustable suction capacity

### Technical specifications

**Max. suction capacity:** 270 l/min

**Max. size of original:** 877 × 1227 mm

**Working height:** 900 mm

**Electr. connection:** 110-230 V, other voltages on request

**w × d × h:** 1550 × 1200 × 900 mm

If you are looking for a perfect solution for digitization and preservation of valuable cultural assets and documents, talk to us. For more than 55 years we have been managing all processes of document capturing, archiving, processing and provision of digital data with our analog and digital systems for scanning and microfilm technology at the highest level. Our systems are used worldwide by renowned archives, libraries, universities, land registries as well as commercial enterprises and service providers.



Zeutschel GmbH · Heerweg 2 · 72070 Tübingen  
Tel.: +49 7071 9706-0 · Fax: +49 7071 9706-44  
info@zeutschel.de · [www.zeutschel.com](http://www.zeutschel.com)

We Digitize Your World